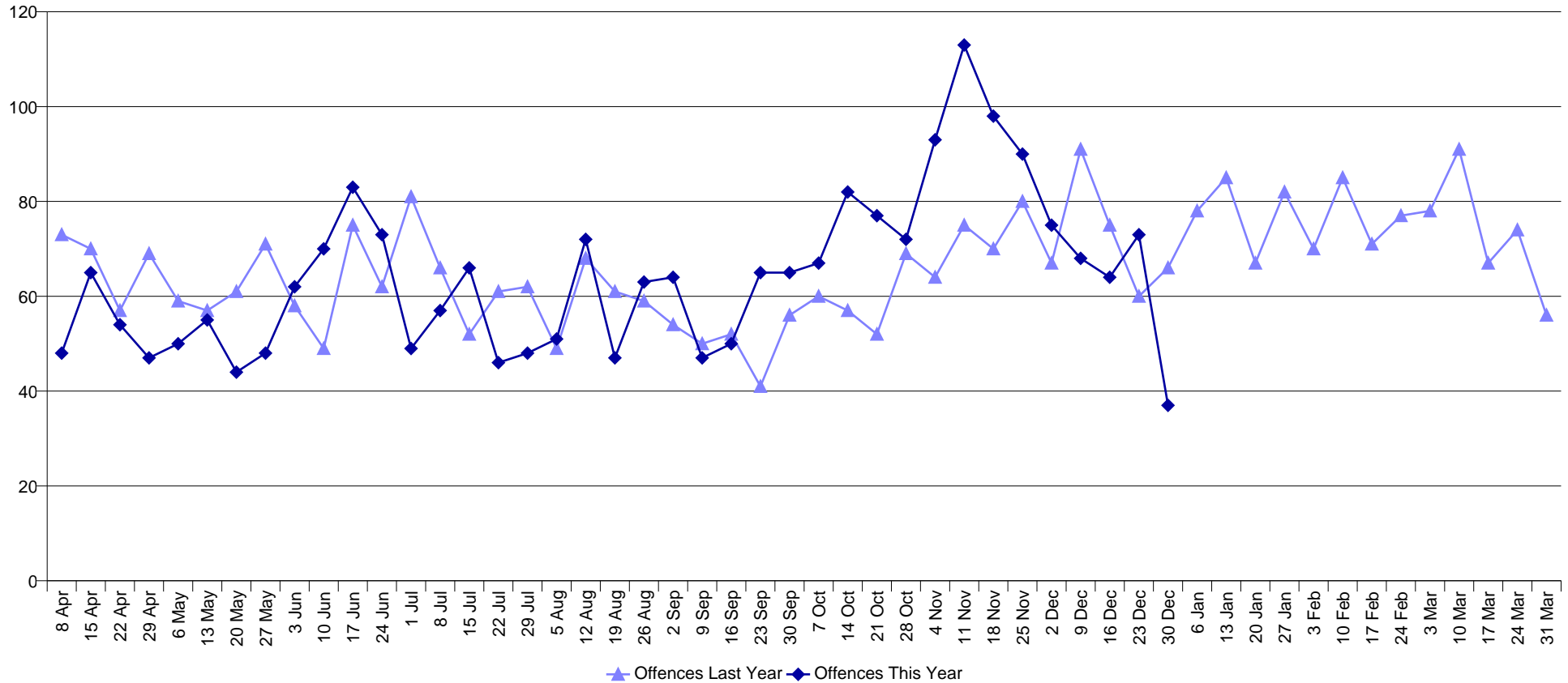


Weekly Residential Burglary Performance - Barnet



FYTD Totals are calculated from 1 April

Offences	21 Oct	28 Oct	4 Nov	11 Nov	18 Nov	25 Nov	2 Dec	9 Dec	16 Dec	23 Dec	30 Dec	FYTD Total
Last Year	52	69	64	75	70	80	67	91	75	60	66	2472
This Year	77	72	93	113	98	90	75	68	64	73	37	2507
% Change	48.1%	4.3%	45.3%	50.7%	40.0%	12.5%	11.9%	-25.3%	-14.7%	21.7%	-43.9%	1.4%

Sanction Detections	21 Oct	28 Oct	4 Nov	11 Nov	18 Nov	25 Nov	2 Dec	9 Dec	16 Dec	23 Dec	30 Dec	FYTD Total	SD Rate
Last Year	6	3	0	4	1	1	3	4	3	1	4	298	12.1%
This Year	1	1	77	2	4	1	2	4	4	3	0	311	12.4%

For Offences - Plum indicates a percentage increase on last year, and Sky Blue indicates a percentage decrease on last year. For Sanction Detections - Plum indicates a SD Rate decrease on last year, and Sky Blue indicates a SD Rate increase on last year.

Data is subject to daily change

Last Refresh Date: 02/01/2013

Performance Helpdesk - 783131

If there are any queries with this report, please call the Helpdesk

PD077/1213/39/v1

02/01/2013 © MOPAC (2013)